

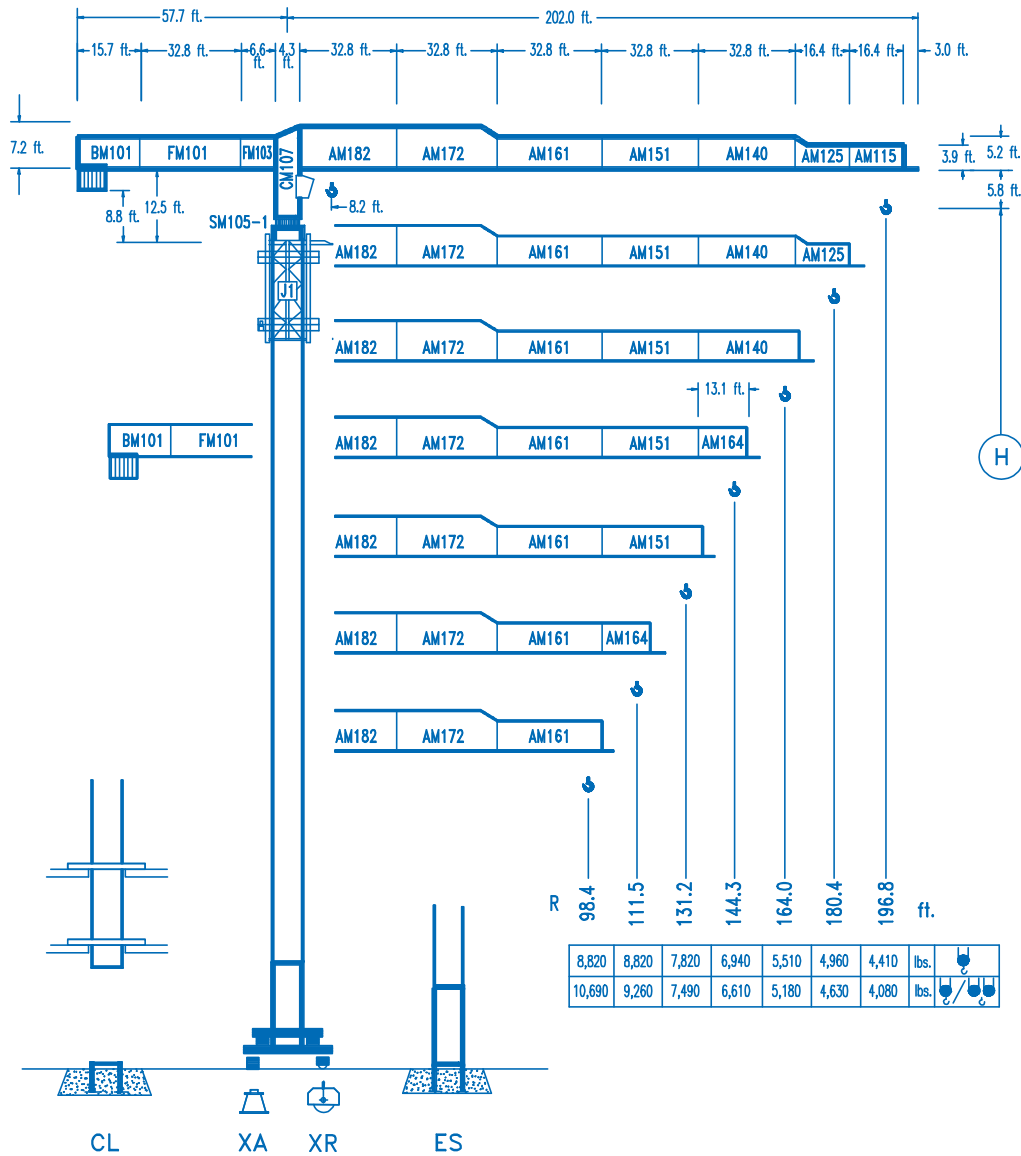


COMANSA

LINDEN 1000

10 LC 140

17,630 lbs.



CE
DIN 15018 H1 B3

R	R _(Cmax)	C _{max}	82.0	98.4	111.5	131.2	144.3	164.0	180.4	196.8	ft.
196.8	108.6 ft. 57.4 ft.	8,820 17,630	8,820 11,820	8,820 9,590	8,560 8,280	7,120 6,820	6,380 6,060	5,490 5,170	4,900 4,570	4,410 4,080	
180.4	109.9 ft. 58.0 ft.	8,820 17,630	8,820 11,950	8,820 9,690	8,660 8,360	7,210 6,890	6,460 6,140	5,550 5,230	4,960 4,630		
164.0	108.9 ft. 57.4 ft.	8,820 17,630	8,820 11,850	8,820 9,600	8,590 8,300	7,140 6,830	6,400 6,080	5,510 5,180			
144.3	116.8 ft. 61.7 ft.	8,820 17,630	8,820 12,790	8,820 10,390	8,820 8,990	7,750 7,420	6,940 6,610				
131.2	118.1 ft. 62.0 ft.	8,820 17,630	8,820 12,910	8,820 10,490	8,820 9,080	7,820 7,490					
111.5	111.5 ft. 63.0 ft.	8,820 17,630	8,820 13,160	8,820 10,690	8,820 9,260						
98.4	98.4 ft. 63.0 ft.	8,820 17,630	8,820 13,160	8,820 10,690							