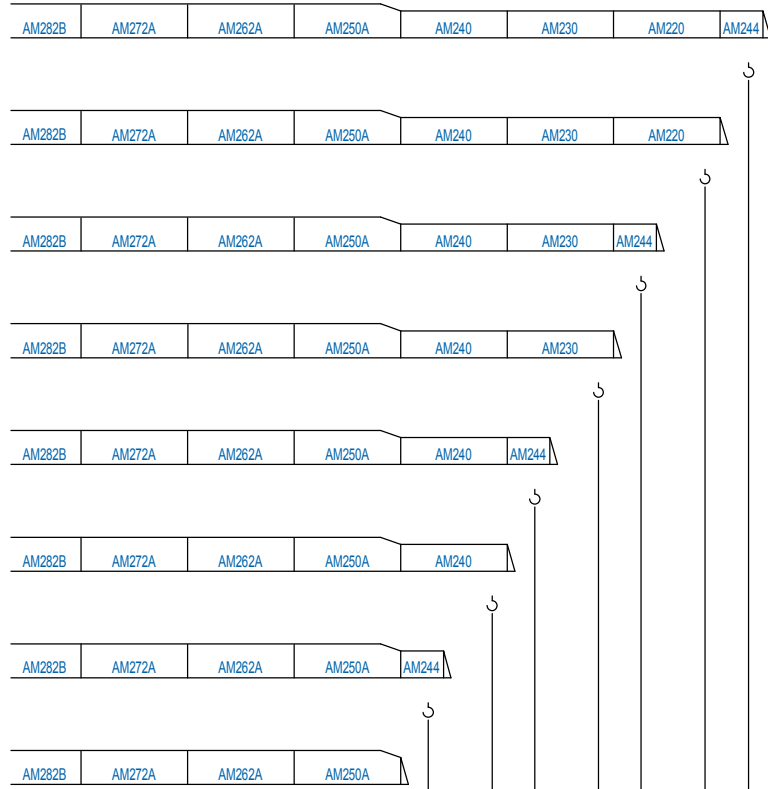
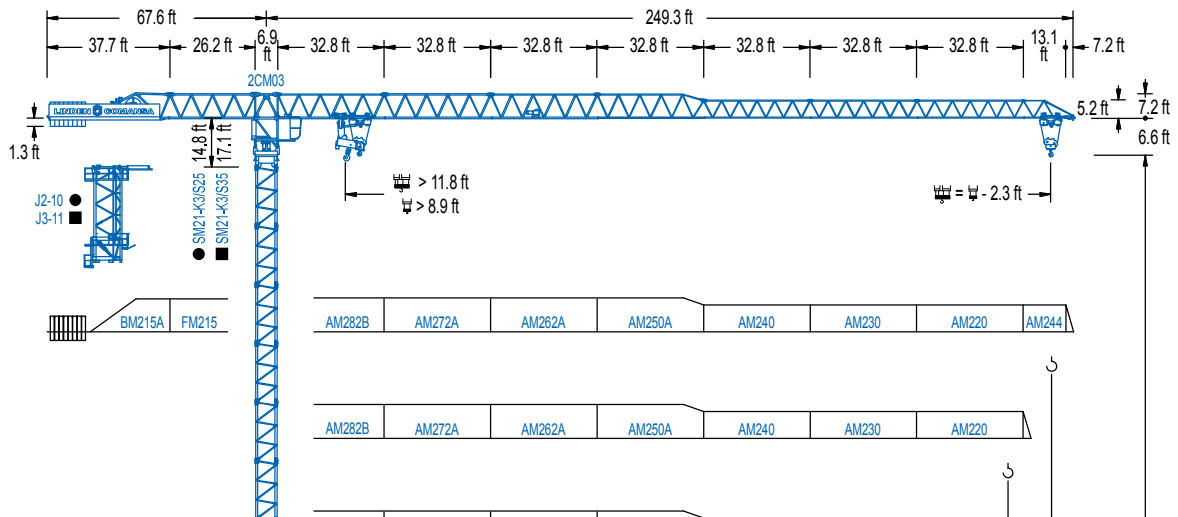


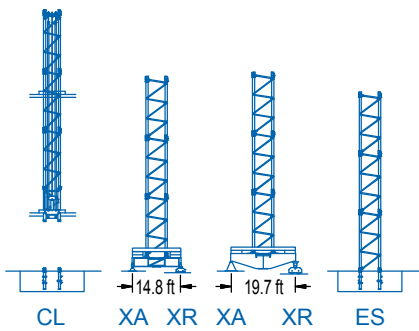
**LC 2100**

**21 LC 335**

**44,090 lb**



R	131.2	144.4	164.0	177.2	196.9	210.0	229.7	242.8	ft
	19,400	16,980	14,550	12,790	9,920	8,820	6,610	5,950	lb
	21,340	18,670	16,010	14,070	10,910	9,700	7,280	6,550	lb

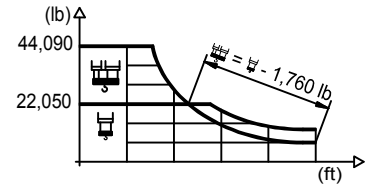


**LC 2100**

## DIAGRAMA DE CARGAS

Load chart / Diagramme de charges / Lastdiagramm / Diagramma di carico / Диаграмма распределения нагрузки

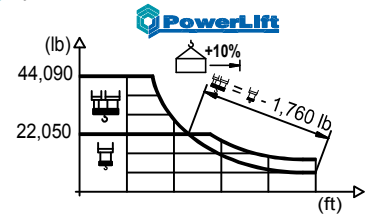
R (ft)	2.590 ft					2.650 ft														
242.8	40.4	49.2	59.1	65.6	72.8	78.1	88.6	98.4	105.0	114.8	124.7	131.2	144.4	164.0	177.2	196.9	210.0	229.7	242.8	ft
	44,090	35,010	28,260	24,960	22,050	22,050	19,140	17,020	15,830	14,310	13,050	12,300	11,020	9,520	8,710	7,670	7,100	6,370	5,950	lb
229.7	41.7	49.2	59.1	65.6	74.8	80.4	88.6	98.4	105.0	114.8	124.7	131.2	144.4	164.0	177.2	196.9	210.0	229.7	ft	
	44,090	36,130	29,210	25,790	22,050	22,050	19,750	17,570	16,360	14,790	13,490	12,720	11,420	9,850	9,020	7,960	7,360	6,610	lb	
210.0	47.6	59.1	65.6	72.2	86.6	93.2	98.4	105.0	114.8	124.7	131.2	144.4	164.0	177.2	196.9	210.0	ft			
	44,090	34,480	30,510	27,310	22,050	22,050	20,720	19,310	17,480	15,960	15,060	13,540	11,730	10,740	9,500	8,820	lb			
196.9	49.2	59.1	65.6	72.2	82.0	89.6	96.5	105.0	114.8	124.7	131.2	144.4	164.0	177.2	196.9	ft				
	44,090	35,850	31,750	28,440	24,490	22,050	20,080	18,210	16,620	15,700	14,110	12,210	11,200	9,920	lb					
177.2	55.1	59.1	65.6	72.2	82.0	88.6	100.4	108.3	114.8	124.7	131.2	144.4	164.0	177.2	ft					
	44,090	40,700	36,090	32,340	27,910	25,530	22,050	22,050	20,680	18,890	17,860	16,070	13,930	12,790	lb					
164.0	57.1	65.6	72.2	82.0	88.6	98.4	104.0	112.5	124.7	131.2	144.4	164.0	ft							
	44,090	37,590	33,710	29,100	26,630	23,550	22,050	22,050	19,710	18,630	16,780	14,550	lb							
144.4	57.4	65.6	72.2	82.0	88.6	98.4	105.0	113.8	124.7	131.2	144.4	ft								
	44,090	37,940	34,040	29,390	26,900	23,790	22,050	22,050	19,950	18,850	16,980	lb								
131.2	58.7	65.6	72.2	82.0	88.6	98.4	107.6	116.8	124.7	131.2	ft									
	44,090	38,980	34,960	30,200	27,650	24,470	22,050	22,050	20,520	19,400	lb									



## DIAGRAMA DE CARGAS POWERLIFT

Load chart PowerLift / Diagramme de charges PowerLift / Lastdiagramm PowerLift / Diagramma di carico PowerLift / Диаграмма распределения нагрузки PowerLift

R (ft)	2.590 ft					2.650 ft														
242.8	43.3	49.2	59.1	65.6	78.4	84.0	91.9	98.4	105.0	114.8	124.7	131.2	144.4	164.0	177.2	196.9	210.0	229.7	242.8	ft
	44,090	38,100	30,820	27,250	22,050	22,050	20,080	18,580	17,310	15,650	14,260	13,470	12,080	10,430	9,550	8,420	7,800	7,010	6,550	lb
229.7	44.6	49.2	59.1	65.6	75.5	80.7	86.6	98.4	105.0	114.8	124.7	131.2	144.4	164.0	177.2	196.9	210.0	229.7	ft	
	44,090	39,370	31,880	28,170	23,920	22,050	22,050	19,160	17,840	16,140	14,730	13,890	12,480	10,780	9,880	8,730	8,090	7,280	lb	
210.0	51.5	59.1	65.6	75.5	82.0	93.8	100.7	105.0	114.8	124.7	131.2	144.4	164.0	177.2	196.9	210.0	ft			
	44,090	37,720	33,420	28,440	25,790	22,050	22,050	21,100	19,110	17,460	16,490	14,840	12,850	11,770	10,450	9,700	lb			
196.9	53.5	59.1	65.6	75.5	82.0	91.9	97.1	104.7	114.8	124.7	131.2	144.4	164.0	177.2	196.9	ft				
	44,090	39,260	34,810	29,630	26,900	23,570	22,050	22,050	19,930	18,190	17,200	15,480	13,400	12,300	10,910	lb				
177.2	59.7	65.6	75.5	82.0	91.9	98.4	109.3	117.8	124.7	131.2	144.4	164.0	177.2	ft						
	44,090	39,620	33,770	30,710	26,940	24,870	22,050	22,050	20,720	19,600	17,640	15,320	14,070	lb						
164.0	62.0	75.5	82.0	91.9	98.4	113.2	122.7	124.7	131.2	144.4	164.0	ft								
	44,090	35,230	32,030	28,130	25,970	22,050	22,050	21,630	20,460	18,430	16,010	lb								
144.4	62.7	75.5	82.0	91.9	98.4	114.5	124.0	124.7	131.2	144.4	ft									
	44,090	35,630	32,390	28,440	26,280	22,050	22,050	21,910	20,720	18,670	lb									
131.2	64.0	75.5	82.0	91.9	98.4	105.0	117.5	127.3	131.2	ft										
	44,090	36,620	33,310	29,260	27,030	25,090	22,050	22,050	21,340	lb										



LC 2100

## MECANISMOS

Mechanisms / Mécanismes / Antriebe / Meccanismi / Механизмы

