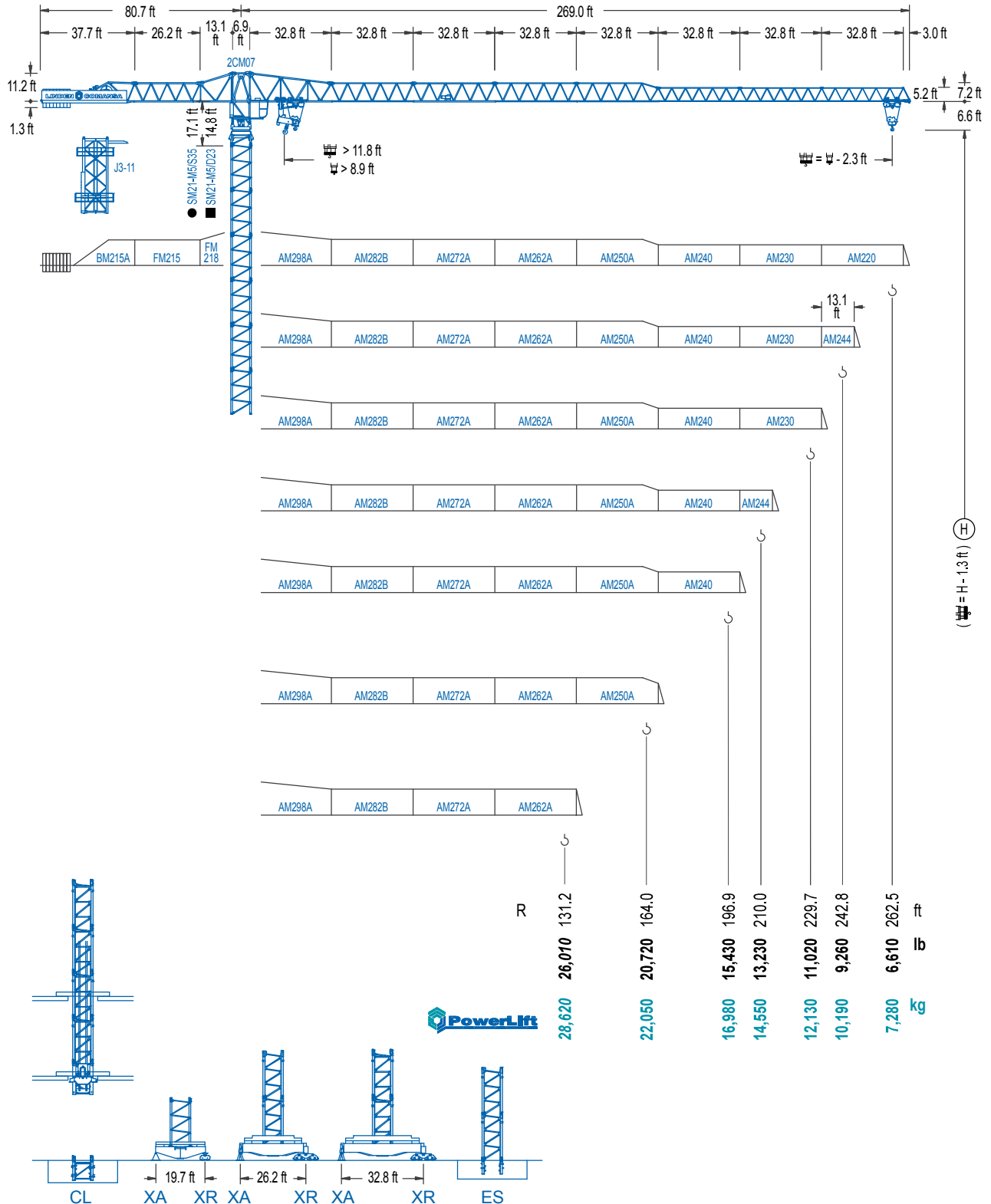


**LC 2100**

**21 LC 450**

**44,090 lb**



**LC 2100**

## DIAGRAMA DE CARGAS

Load chart / Diagramme de charges / Lastdiagramm / Diagramma di carico / Диаграмма распределения нагрузки

R (ft)																				
262.5	46.9 44,090	59.1 33,930	65.6 30,030	72.2 26,870	85.3 22,050	91.5 22,050	98.4 20,330	105.0 18,920	114.8 17,130	124.7 15,630	131.2 14,770	147.6 12,940	164.0 11,490	180.4 10,300	196.9 9,300	210.0 8,640	229.7 7,760	242.8 7,280	262.5 6,610	ft lb
242.8		57.1 44,090	65.6 37,590	72.2 33,710	82.0 29,100	91.9 25,530	98.4 23,550	104.0 22,050	111.9 22,050	124.7 19,580	131.2 18,500	147.6 16,250	164.0 14,440	180.4 12,990	196.9 11,770	210.0 10,930	229.7 9,880	242.8 9,260	ft lb	
229.7			62.3 44,090	72.2 37,430	82.0 32,360	91.9 28,420	98.4 26,230	105.0 24,340	114.2 22,050	123.0 22,050	131.2 20,520	147.6 18,030	164.0 16,070	180.4 14,460	196.9 13,120	210.0 12,190	229.7 11,020	ft lb		
210.0			66.9 44,090	72.2 40,430	82.0 34,990	91.9 30,750	98.4 28,420	105.0 26,390	114.8 23,790	122.7 22,050	132.2 22,050	147.6 19,510	164.0 17,390	180.4 15,650	196.9 14,220	210.0 13,230	ft lb			
196.9			71.9 44,090	82.0 37,900	91.9 33,360	98.4 30,820	105.0 28,640	114.8 25,840	124.7 23,500	131.6 22,050	142.1 22,050	164.0 18,850	180.4 16,980	196.9 15,430	ft lb					
164.0			77.8 44,090	82.0 41,560	91.9 36,600	98.4 33,840	105.0 31,460	114.8 28,420	124.7 25,860	143.0 22,050	154.9 22,050	164.0 20,720	ft lb							
131.2				81.0 44,090	91.9 38,250	98.4 35,410	105.0 32,910	114.8 29,740	124.7 27,070	128.9 26,010	ft lb									

## DIAGRAMA DE CARGAS POWERLIFT

Load chart PowerLift / Diagramme de charges PowerLift / Lastdiagramm PowerLift / Diagramma di carico PowerLift / Диаграмма распределения нагрузки PowerLift

R (ft)																				
262.5	50.5 44,090	59.1 36,990	65.6 32,760	72.2 29,340	82.0 25,290	92.2 22,050	98.8 22,050	105.0 20,610	114.8 18,670	124.7 17,040	131.2 16,090	147.6 14,130	164.0 12,540	180.4 11,270	196.9 10,190	210.0 9,460	229.7 8,530	242.8 7,980	262.5 7,280	ft lb
242.8		61.7 44,090	65.6 41,120	72.2 36,910	82.0 31,900	91.9 28,000	98.4 25,860	105.0 23,990	112.9 22,050	121.4 22,050	131.2 20,240	147.6 17,770	164.0 15,830	180.4 14,240	196.9 12,920	210.0 12,020	229.7 10,850	242.8 10,190	ft lb	
229.7			67.6 44,090	72.2 41,010	82.0 35,490	91.9 31,220	98.4 28,840	105.0 26,790	114.8 24,140	124.0 22,050	133.5 22,050	147.6 19,780	164.0 17,610	180.4 15,870	196.9 14,420	210.0 13,400	229.7 12,130	ft lb		
210.0			72.5 44,090	82.0 38,430	91.9 33,800	98.4 31,260	105.0 29,030	114.8 26,210	124.7 23,830	133.2 22,050	143.7 22,050	164.0 19,090	180.4 17,200	196.9 15,630	210.0 14,550	ft lb				
196.9			78.1 44,090	82.0 41,670	91.9 36,680	98.4 33,950	105.0 31,550	114.8 28,480	124.7 25,930	143.4 22,050	154.9 22,050	164.0 20,720	180.4 18,670	196.9 16,980	ft lb					
164.0				84.3 44,090	91.9 40,040	98.4 37,040	105.0 34,460	114.8 31,150	124.7 28,370	131.2 26,760	155.2 22,050	164.0 22,050	ft lb							
131.2				87.9 44,090	91.9 41,950	98.4 38,850	105.0 36,130	114.8 32,670	124.7 29,760	128.9 28,620	ft lb									

LC 2100

## MECANISMOS

Mechanisms / Mécanismes / Antriebe / Meccanismi / Механизмы

