

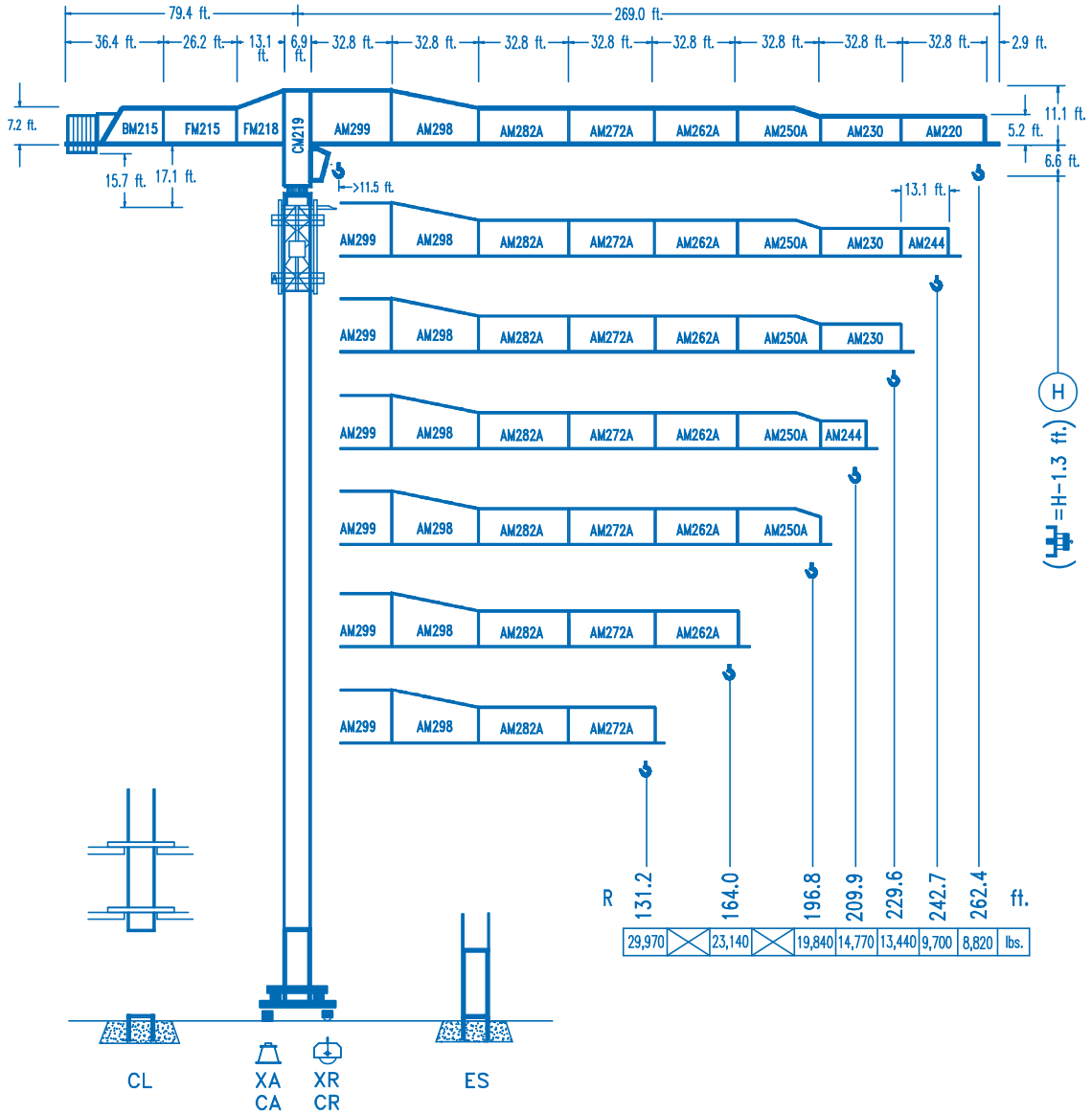


**COMANSA**

**LINDEN 2100**

**21 LC 550**

**39,670 lbs.**



**CE**  
DIN 15018 H1 B3

R	⌘				⌘									
<b>262.4</b>	67.6	78.7	98.4	123.7	126.9	144.3	164.0	177.1	196.8	209.9	229.6	242.7	262.4	ft.
	39,670	33,440	25,900	19,840	19,840	17,250	14,980	13,750	12,230	11,370	10,270	9,640	8,820	lbs.
<b>242.7</b>	67.6	78.7	98.4	123.7	127.6	144.3	164.0	177.1	196.8	209.9	229.6	242.7	ft.	
	39,670	33,430	25,890	1,840	19,840	17,330	15,060	13,830	12,300	11,440	10,340	9,700	lbs.	
<b>229.6</b>		84.0	98.4	111.5	131.2	153.8	161.0	177.1	196.8	209.9	229.6	ft.		
		39,670	33,140	28,750	23,870	19,840	19,840	17,880	15,930	14,840	13,440	lbs.		
<b>209.9</b>		83.0	98.4	111.5	131.2	152.5	160.4	177.1	196.8	209.9	ft.			
		39,670	32,810	28,460	23,630	19,840	19,840	17,790	15,860	14,770	lbs.			
<b>196.8</b>			100.7	111.5	131.2	144.3	164.0	185.3	196.8	ft.				
			39,670	35,360	29,470	26,460	22,870	19,840	19,840	lbs.				
<b>164.0</b>			100.4	111.5	131.2	144.3	164.0	ft.						
			39,670	35,260	29,390	26,380	23,140	lbs.						
<b>131.2</b>			100.4	111.5	131.2	ft.								
			39,670	35,310	29,970	lbs.								

