

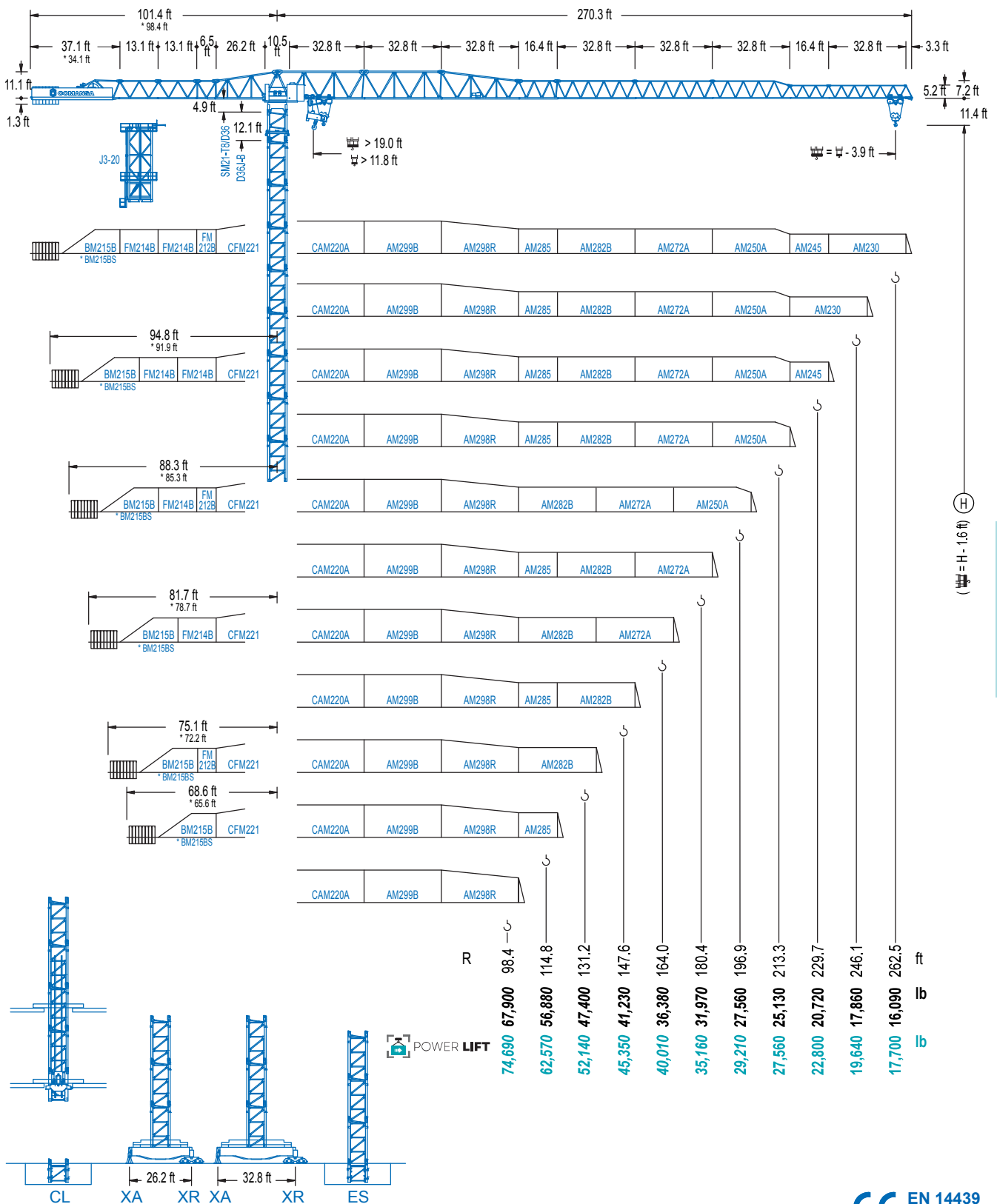


COMANSA

2100 Series

21 LC 750

82,670 lb



2100 Series

EN 14439 (C/25)

DIAGRAMA DE CARGAS

Load chart / Diagramme de charges / Lastdiagramm / Diagramma di carico / Диаграмма распределения нагрузки

R (ft)	H										L						
262.5	56.8	65.6	75.5	82.0	91.9	98.4	114.8	131.2	138.5	164.0	180.4	196.9	213.3	229.7	246.1	262.5	ft
	82,670	69,690	58,880	53,240	46,360	42,570	35,100	29,590	27,560	27,560	24,740	22,400	20,460	18,780	17,350	16,090	lb
246.1	58.1	65.6	75.5	82.0	91.9	98.4	114.8	131.2	141.7	168.0	180.4	196.9	213.3	229.7	246.1		ft
	82,670	71,610	60,540	54,740	47,710	43,830	36,180	30,510	27,560	27,560	25,420	23,060	21,050	19,330	17,860		lb
229.7	61.7	65.6	75.5	82.0	91.9	98.4	114.8	131.2	147.6	150.6	178.5	196.9	213.3	229.7			ft
	82,670	76,590	64,840	58,690	51,190	47,070	38,910	32,890	28,260	27,560	27,560	24,670	22,530	20,720			lb
213.3	67.3	75.5	82.0	91.9	98.4	114.8	131.2	147.6	160.8	165.4	196.5	213.3					ft
	82,670	72,290	65,480	57,210	52,670	43,700	37,040	31,920	28,620	27,560	27,560	25,130					lb
196.9	75.8																ft
	82,670	75,510	66,120	60,940	50,730	43,170	37,350	32,740	27,560	27,560	27,560	25,560					lb
180.4	80.1	91.9	98.4	114.8	131.2	147.6	164.0	176.5									ft
	82,670	70,370	64,900	54,080	46,100	39,950	35,050	31,970									lb
164.0	80.4	91.9	98.4	114.8	131.2	147.6	160.1										ft
	82,670	70,810	65,300	54,430	46,380	40,210	36,380										lb
147.6	80.1	91.9	98.4	114.8	131.2	143.7											ft
	82,670	70,280	64,820	54,010	46,030	41,230											lb
131.2	79.4	91.9	98.4	114.8	127.3												ft
	82,670	69,780	64,350	53,620	47,400												lb
114.8	80.7	91.9	98.4	110.9													ft
	82,670	70,990	65,480	56,880													lb
98.4	79.7	91.9	94.5														ft
	82,670	70,170	67,900														lb

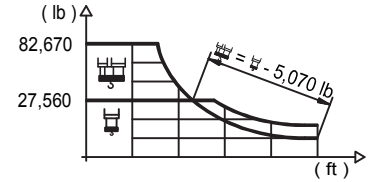
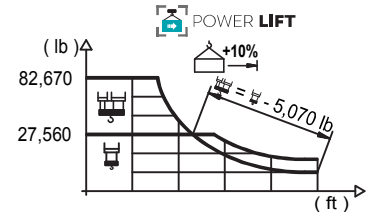


DIAGRAMA DE CARGAS POWERLIFT

Load chart PowerLift / Diagramme de charges PowerLift / Lastdiagramm PowerLift / Diagramma di carico PowerLift / Диаграмма распределения нагрузки PowerLift

R (ft)	H										L						
262.5	61.4	65.6	75.5	82.0	91.9	98.4	114.8	131.2	150.3	177.8	180.4	196.9	213.3	229.7	246.1	262.5	ft
	82,670	76,430	64,680	58,530	51,060	46,960	38,820	32,800	27,560	27,560	27,090	24,560	22,440	20,640	19,070	17,700	lb
246.1	63.0	75.5	82.0	91.9	98.4	114.8	131.2	147.6	153.9	182.4	196.9	213.3	229.7	246.1			ft
	82,670	66,580	60,250	52,580	48,370	40,040	33,860	29,120	27,560	27,560	25,290	23,100	21,250	19,640			lb
229.7	66.6	75.5	82.0	91.9	98.4	114.8	131.2	147.6	163.7	193.9	196.9	213.3	229.7				ft
	82,670	71,340	64,620	56,460	51,960	43,080	36,530	31,480	27,560	27,560	27,090	24,780	22,800				lb
213.3	73.2																ft
	82,670	72,160	63,140	58,160	48,370	41,120	35,540	31,110	28,170	27,560	27,560	25,560					lb
196.9	81.4	91.9	98.4	114.8	131.2	147.6	164.0	180.4	192.9								ft
	82,670	71,830	66,270	55,250	47,110	40,830	35,850	31,810	29,210								lb
180.4	86.6	91.9	98.4	114.8	131.2	147.6	164.0	176.5									ft
	82,670	76,680	70,770	59,080	50,440	43,780	38,490	35,160									lb
164.0	86.6	91.9	98.4	114.8	131.2	147.6	160.1										ft
	82,670	77,290	71,340	59,570	50,860	44,160	40,010										lb
147.6	86.3	91.9	98.4	114.8	131.2	143.7											ft
	82,670	76,870	70,940	59,220	50,550	45,350											lb
131.2	86.0	91.9	98.4	114.8	127.3												ft
	82,670	76,460	70,570	58,910	52,140												lb
114.8	87.3	91.9	98.4	110.9													ft
	82,670	77,910	71,910	62,570													lb
98.4	86.6	91.9	94.5														ft
	82,670	77,180	74,690														lb



2100 Series

Datos válidos hasta 328 ft de ABG. Para alturas mayores consultar / Valid data up to 328 ft HUH. Additional heights on request / Données valables jusqu'à 328 ft HSC. Pour des autres hauteurs, merci de nous consulter / Gültige Daten bis zu 328 ft HH. Bei höheren Hakenhöhen nachfragen / Dati validi fino a 328 ft ASG. Per altezze superiori consultare Comansa / Допустимые данные до 328 фут ВПК. Для более высоких высот консультируйтесь

MECANISMOS

Mechanisms / Mécanismes / Antriebe / Meccanismi / Механизмы

