

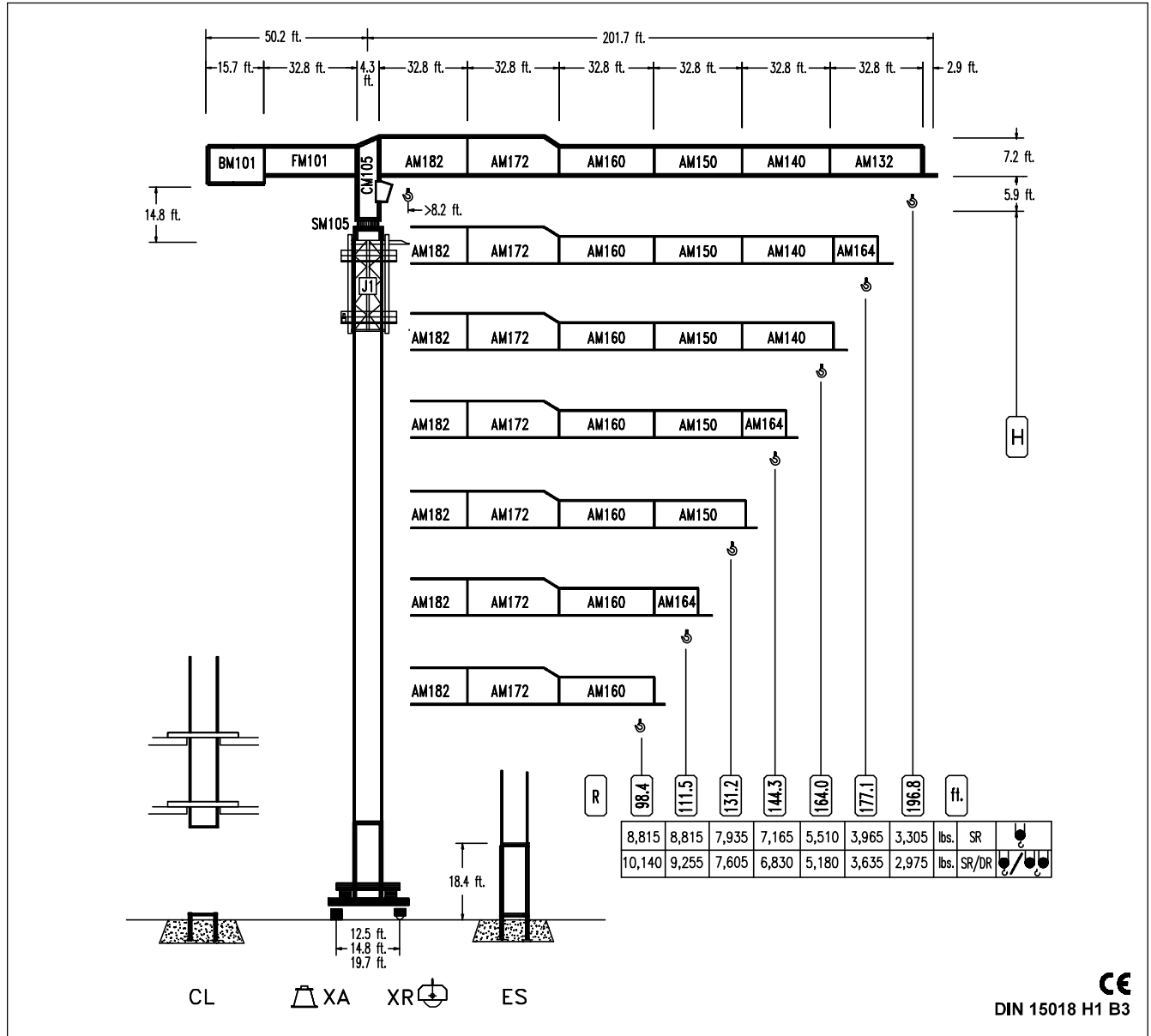


# COMANSA

## LINDEN 1000

## LC-1060

## ft./lbs.



**CE**  
DIN 15018 H1 B3

R	R <sub>(Gmax)</sub>	C <sub>max</sub>	82.0	98.4	111.5	131.2	144.3	164.0	177.1	196.8	ft.	lbs.
196.8	SR 46.3 ft.	8,815 17,630	8,815 9,135	7,625 7,360	6,610 6,315	5,455 5,155	4,870 4,560	4,165 3,845	3,780 3,460	3,305 2,975		
177.1	SR 47.9 ft.	8,815 17,630	8,815 9,530	7,965 7,680	6,900 6,600	5,710 5,400	5,090 4,785	4,365 4,035	3,965 3,635			
164.0	SR 57.8 ft.	8,815 17,630	8,815 11,845	8,815 9,600	8,595 8,300	7,140 6,830	6,405 6,085	5,510 5,180				
144.3	SR 61.7 ft.	8,815 17,630	8,815 12,795	8,815 10,390	8,815 8,995	7,750 7,415	6,945 6,610					
131.2	SR 62.0 ft.	8,815 17,630	8,815 12,915	8,815 10,490	8,815 9,080	7,825 7,495						
111.5	SR 63.3 ft.	8,815 17,630	8,815 13,160	8,815 10,690	8,815 9,255							
98.4	SR 63.0 ft.	8,815 17,630	8,815 13,160	8,815 10,690								