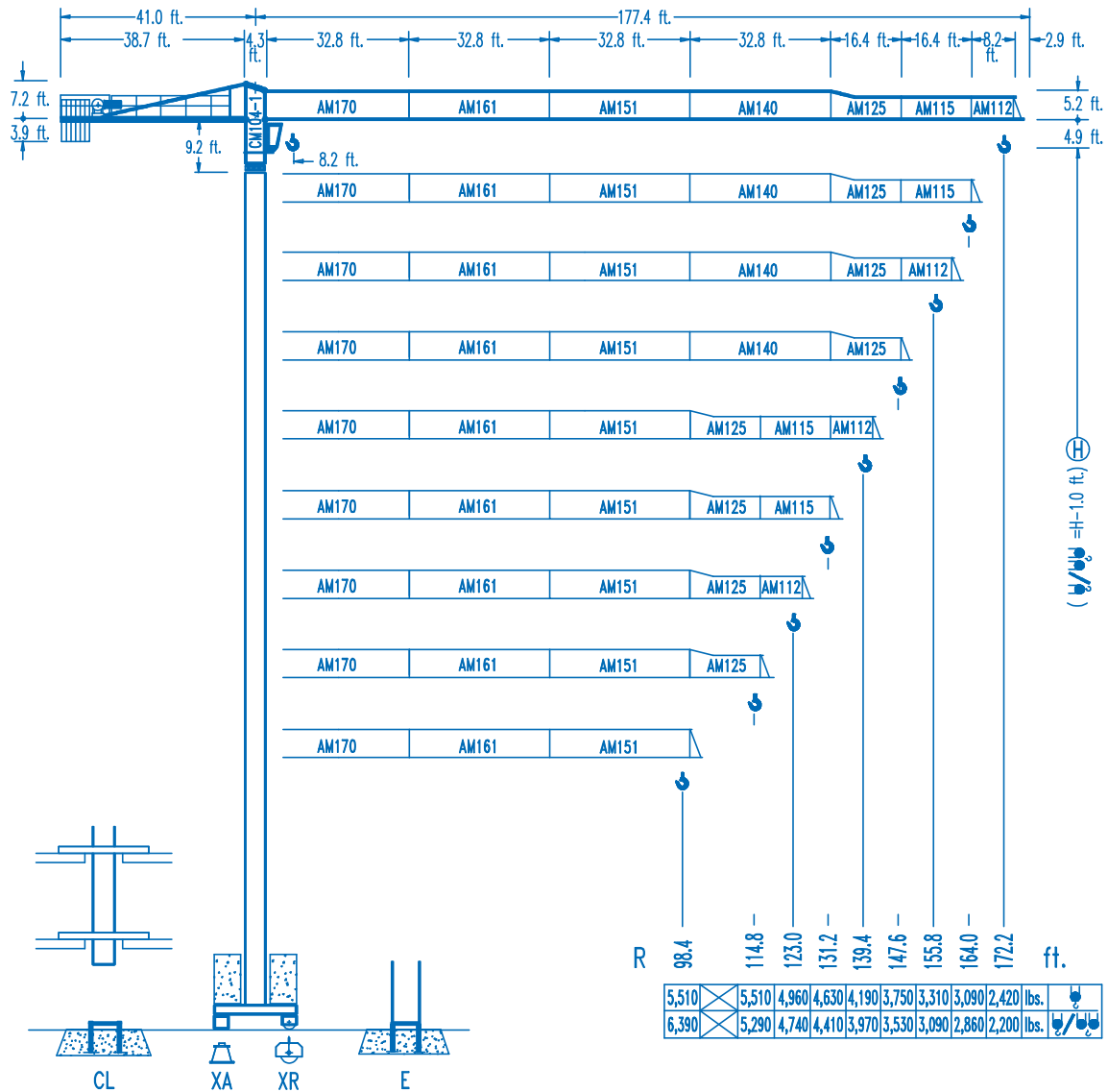




COMANSA

LC-5211

1 1,020 lbs.



CE
DIN 15018 H1 B3

R	R(Cmax)	Cmax	65.6	82.0	98.4	114.8	123.0	131.2	139.4	147.6	155.8	164.0	172.2	ft.
172.2	87.9 ft.	5,510	5,510	5,510	4,830	4,010	3,700	3,420	3,170	2,950	2,750	2,580	2,420	ft.
	46.6 ft.	11,020	7,450	5,730	4,580	3,790	3,480	3,200	2,950	2,730	2,530	2,360	2,200	lbs.
164.0	101.0 ft.	5,510	5,510	5,510	4,740	4,360	4,060	3,770	3,500	3,280	3,090	2,860		
	53.5 ft.	11,020	8,730	6,740	5,540	4,520	4,140	3,830	3,550	3,280	3,060	2,860		
155.8	101.4 ft.	5,510	5,510	5,510	4,760	4,390	4,080	3,790	3,530	3,310	3,090			
	53.5 ft.	11,020	8,770	6,790	5,470	4,540	4,170	3,860	3,570	3,310	3,090			
147.6	106.3 ft.	5,510	5,510	5,510	5,050	4,650	4,320	4,010	3,750					
	56.1 ft.	11,020	9,260	7,160	5,800	4,830	4,430	4,100	3,790	3,530				
139.4	110.2 ft.	5,510	5,510	5,510	5,240	4,850	4,500	4,190						
	58.4 ft.	11,020	9,650	7,470	6,040	5,020	4,630	4,280	3,970					
131.2	112.8 ft.	5,510	5,510	5,510	5,400	4,980	4,630							
	59.7 ft.	11,020	9,920	7,690	6,210	5,180	4,760	4,410						
123.0	112.2 ft.	5,510	5,510	5,510	5,380	4,960								
	59.4 ft.	11,020	9,850	7,650	6,170	5,160	4,740							
114.8	114.8 ft.	5,510	5,510	5,510	5,510									
	60.7 ft.	11,020	10,090	7,850	6,350	5,290								
98.4	98.4 ft.	5,510	5,510	5,510	5,510									
	61.0 ft.	11,020	10,160	7,890	6,390									