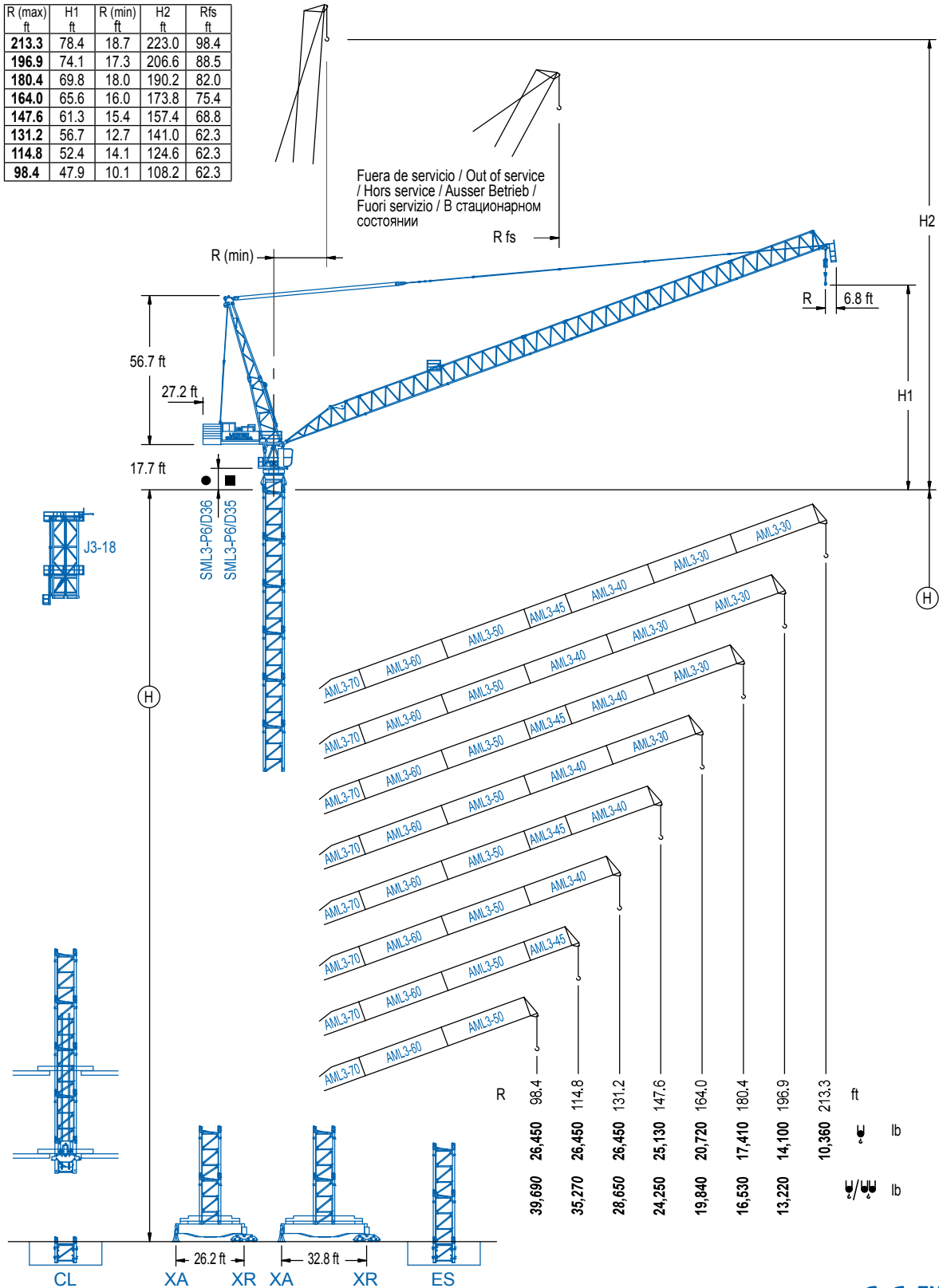


| R (max) ft | H1 ft | R (min) ft | H2 ft | Rfs ft |
|---------------|----------|---------------|----------|-----------|
| 213.3 | 78.4 | 18.7 | 223.0 | 98.4 |
| 196.9 | 74.1 | 17.3 | 206.6 | 88.5 |
| 180.4 | 69.8 | 18.0 | 190.2 | 82.0 |
| 164.0 | 65.6 | 16.0 | 173.8 | 75.4 |
| 147.6 | 61.3 | 15.4 | 157.4 | 68.8 |
| 131.2 | 56.7 | 12.7 | 141.0 | 62.3 |
| 114.8 | 52.4 | 14.1 | 124.6 | 62.3 |
| 98.4 | 47.9 | 10.1 | 108.2 | 62.3 |

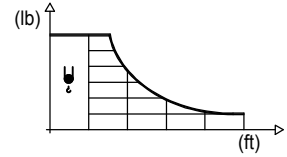


LCL

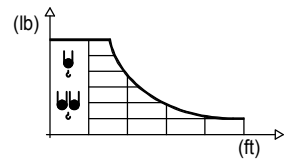
DIAGRAMA DE CARGAS

Load chart / Diagramme de charges / Lastdiagramm / Diagramma di carico / Диаграмма распределения нагрузки

| R (ft) | ψ | RCmax (ft) | 49.2 | 65.6 | 82.0 | 98.4 | 114.8 | 131.2 | 147.6 | 164.0 | 180.4 | 196.9 | 213.3 | ↔ (ft) ↕ (lb) |
|--------|---|------------|------|------|--------|--------|--------|--------|--------|--------|--------|--------|--------|------------------|
| 213.3 | | 91.9 | | | 26,450 | 24,600 | 20,810 | 17,960 | 15,760 | 13,990 | 12,560 | 11,350 | 10,360 | |
| 196.9 | | 109.9 | | | 26,450 | 24,880 | 21,640 | 19,130 | 17,100 | 15,450 | 14,100 | | | |
| 180.4 | | 124.7 | | | 26,450 | 24,970 | 21,890 | 19,420 | 17,410 | | | | | |
| 164.0 | | 132.9 | | | | | 26,450 | 23,830 | 20,720 | | | | | |
| 147.6 | | 141.1 | | | | | 26,450 | 25,130 | | | | | | |
| 131.2 | | 131.2 | | | | | 26,450 | | | | | | | |
| 114.8 | | 114.8 | | | | 26,450 | | | | | | | | |
| 98.4 | | 98.4 | | | 26,450 | | | | | | | | | |

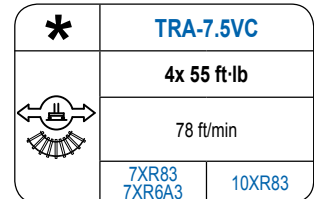
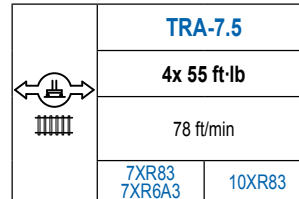
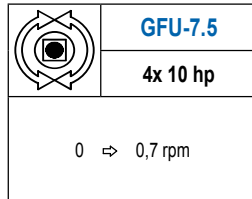
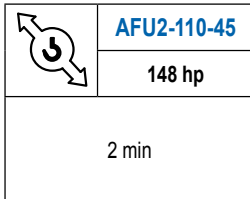
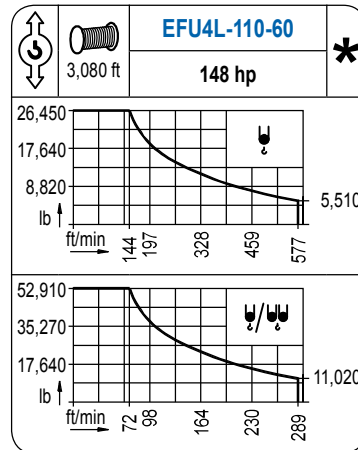
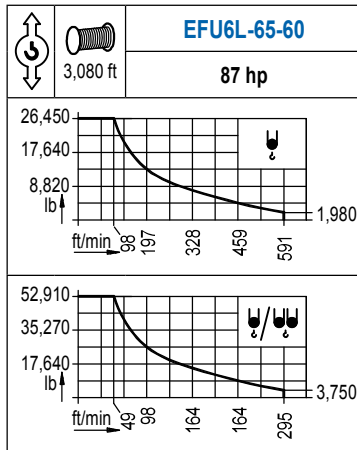


| R (ft) | ψ | RCmax (ft) | 49.2 | 65.6 | 82.0 | 98.4 | 114.8 | 131.2 | 147.6 | 164.0 | 180.4 | 196.9 | 213.3 | ↔ (ft) ↕ (lb) |
|--------|---|------------|--------|--------|--------|--------|--------|--------|--------|--------|--------|--------|-------|------------------|
| 196.9 | | 54.1 | 52,910 | 43,250 | 34,190 | 28,170 | 23,870 | 20,670 | 18,160 | 16,180 | 14,570 | 13,220 | | |
| 180.4 | | 65.6 | | 52,910 | 40,910 | 33,240 | 27,880 | 23,940 | 20,890 | 18,490 | 16,530 | | | |
| 164.0 | | 72.2 | | 52,910 | 45,340 | 36,500 | 30,420 | 25,970 | 22,550 | 19,840 | | | | |
| 147.6 | | 68.9 | | 52,910 | 44,950 | 37,120 | 31,560 | 27,420 | 24,250 | | | | | |
| 131.2 | | 75.5 | | 52,910 | 48,230 | 39,440 | 33,240 | 28,650 | | | | | | |
| 114.8 | | 78.7 | | 52,910 | 52,400 | 42,320 | 35,270 | | | | | | | |
| 98.4 | | 75.5 | | 52,910 | 49,200 | 39,690 | | | | | | | | |



MECANISMOS

Mechanisms / Mécanismes / Antriebe / Meccanismi / Механизмы



| POTENCIA / POWER / PUISSANCE / LEISTUNG / POTENZA / МОЩНОСТЬ | | | | Tensión de alimentación / Operating voltage / Tension de service / Betriebsspannung / Tensione di alimentazione / Напряжение источника питания | Generator / Generator / Générateur / Generator / Generatore / Генератор |
|--|---|--|---|--|---|
| Elevación / Hoist / Levage / Hub / Sollevamento / Тин механизма (подъем) | Abatimiento / Luffing / Relevage / Einziehen / Brandeggio / Складывание | Giro / Slewing / Rotation / Drehbewegung / Rotazione / Поворот | Traslación / Travel / Translation / Verfahrbewegung / Traslazione / Ход | 480 V | 365 kVA |
| EFU6L-65-60 | AFU2-110-45 | (4x) GFU-7.5 | (4x) TRA-7.5 | 3ph | 430 kVA |
| EFU4L-110-60 | | | | 60 Hz | |

Optional / Optional / En option / Kaufoption / Opzionale / Опционально
